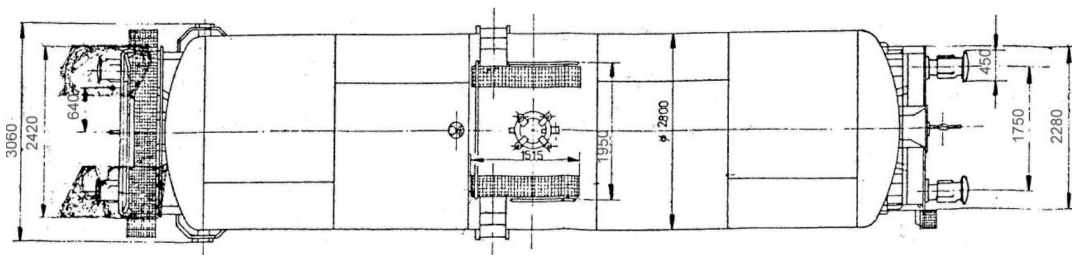
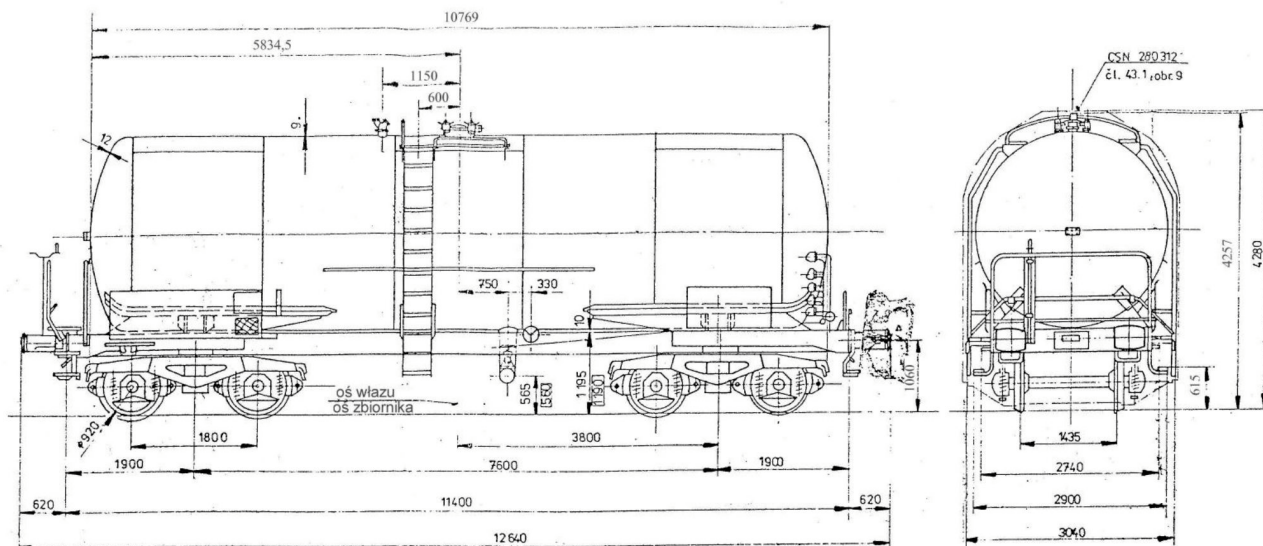


4-axle rail tank car 61,3 m<sup>3</sup>, heated for the transport of light and heavy petroleum products



Wagon type 9-343.2

Page 1/2



### TECHNICAL DATA

#### 1. General

Serie: Zaes  
 Own weight: ca. 26,3 t,  
 Axle load: 20,0 t

Limits load  
 (with an own weight 26,3 t):

	A	B	C
S	37,7 t	45,7 t	53,7 t
120	0,00 t		

Type of brake: DK-GP 16"  
 Minimal curven radius  
 (with slow coupling): 35 m

#### 2. Running gear

Boggies: Y25Cs  
 Wheelsets: monoblock, 920 mm

4-axle rail tank car 61,3 m<sup>3</sup>, heated for the transport of light and heavy petroleum products



Page 2/2

Wagon type 9-343.2

### 3. Tank

Capacity:	61,3 m <sup>3</sup>
Material:	Stal 11378 / 11503 (ČSN)
Design pressure:	2,5 bar
The tank RID-code:	L1,5BN
Heating:	heating steam, 12 pieces of pipes for heating, heating surface 50 m <sup>2</sup>
Insulation:	no
Residue emptying:	no
Forced ventilation:	no
Gas pendoleum:	no

### 4. Loading and unloading devices

Filling manhole:	4-screw DN500, in top of tank
Bottom valve:	DN150 "Slovnaft" operated from the down (from the track level)
T-pipe:	DN150
Discharging valves:	2 pcs. of the ball valves DN100 with connection M130x6